

# KIRIBATI PORTS AUTHORITY



46<sup>th</sup> PMTA Conference, Country paper by: Mwakin Nauto (CEO)

# Contents



Company overview



Ship calls



Imports/Exports



Ongoing Projects



Future projects



Challenges



Question & Answers

# Overview

Kiribati Ports Authority (KPA) is a SOE established in 1990

KPA has 2 ports, Main Port is Betio Port (Tarawa) and Kiritimati Port(Christmas Island)

Total Number of staff: 124 (Betio Port [87M, 17F], Kiritimati Port[16 M, 4F])

Departments: 1. Port Control, 2: Port Logistics, 3: Port Security, 4: Engineering, 5: Finance, 6: ICT, and 7: Human Resources & Admin

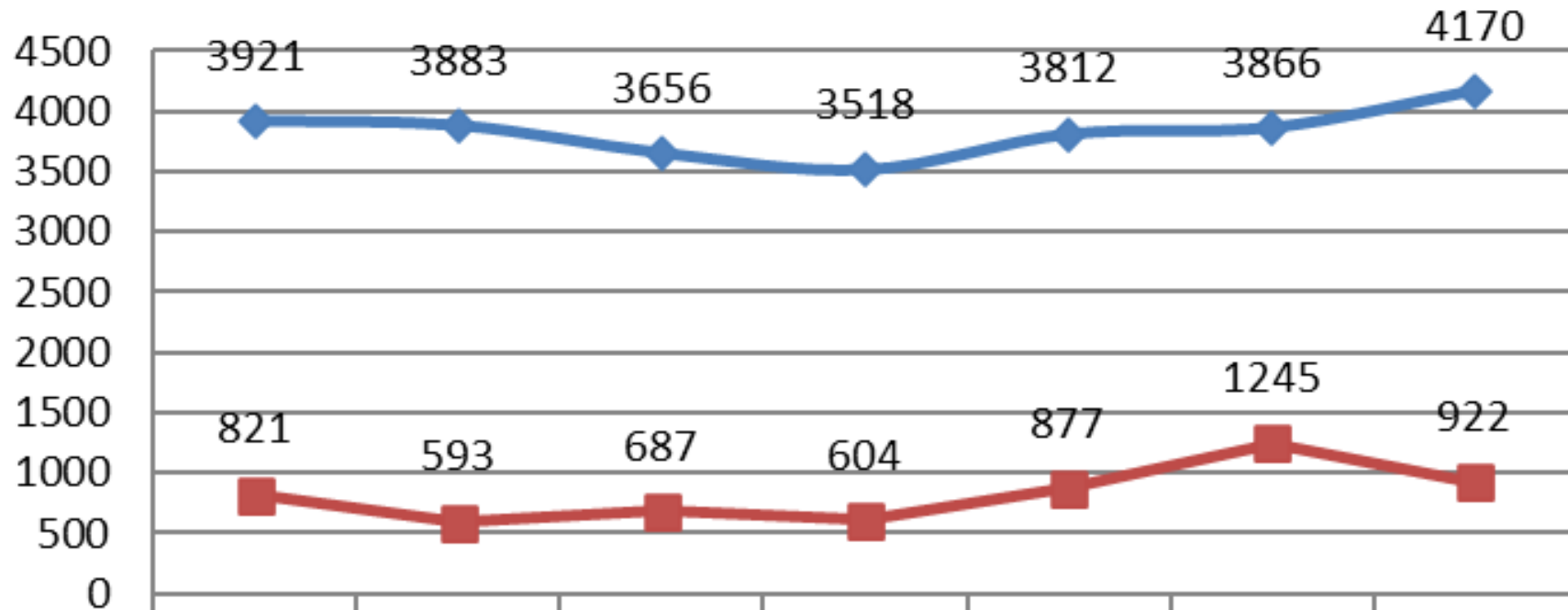


# Number of CALLS

	2023												TOTAL	Avg Mnth
	Jan	Feb	Mar	Apr	May	Jun	Jul	Aug	Sep	Oct	Nov	Dec	2023	call
<b>Container</b>	2	2	3	4	3	3	2	2	1	5	2	4	33	2.8
<b>Domestic</b>	159	177	161	98	91	110	84	57	116	91	66	43	1253	104.4
<b>Fishing</b>	17	12	24	23	41	45	51	24	57	81	83	71	529	44.1
<b>Tanker</b>	1	0	1	2	5	1	2	4	1	2	2	1	22	1.8
<b>Other</b>	2	2	0	0	3	0	4	0	2	2	4	0	19	1.6

# Discharged containers

## DISCHARGED CONTAINERS

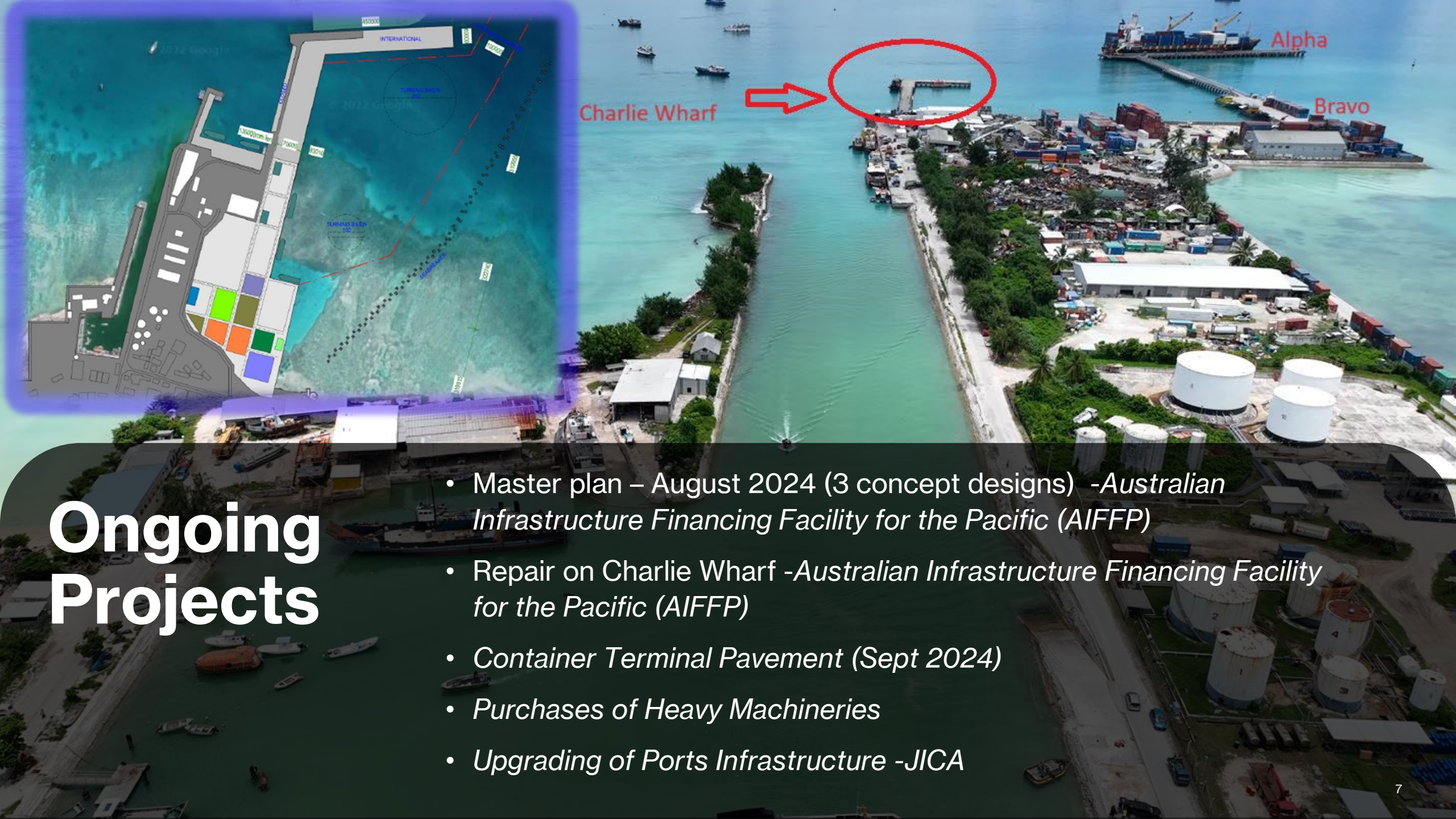


	2017	2018	2019	2020	2021	2022	2023
TEU	3921	3883	3656	3518	3812	3866	4170
FEU	821	593	687	604	877	1245	922

# Loaded Containers

## NUMBER OF LOADED CONTAINERS

YEAR ---->	2017		2018		2019		2020		2021		2022		2023		TOTAL		Avg 7 yrs
MONTH	FEU	TEU	FEU	TEU	FEU	TEU	FEU	TEU	FEU	TEU	FEU	TEU	FEU	TEU	FEU	TEU	
Jan	7	248	40	347	45	381	27	157	21	167	95	497	65	296	300	2093	342
Feb	42	295	19	333	30	334	38	343	48	467	49	311	70	221	296	2304	371
Mar	46	340	23	82	23	232	20	121	86	333	108	272	115	522	421	1902	332
Apr	43	288	52	542	58	290	8	148	40	296	52	448	80	353	333	2365	385
May	42	366	34	292	43	279	47	222	110	604	115	602	56	341	447	2706	450
Jun	45	254	50	423	44	329	36	412	58	453	39	230	69	350	341	2451	399
Jul	54	292	25	249	60	276	75	458	83	270	79	278	25	231	401	2054	351
Aug	26	103	42	345	85	501	64	355	86	440	25	232	85	381	413	2357	396
Sep	77	412	30	285	36	176	42	389	108	342	100	306	38	194	431	2104	362
Oct	26	349	20	224	70	448	39	321	62	317	58	415	78	316	353	2390	392
Nov	26	260	35	438	30	255	45	222	105	409	153	451	75	132	469	2167	377
Dec	40	430	53	330	63	292	37	241	35	152	83	386	152	687	463	2518	426
Grand Total	474	3637	423	3890	587	3793	478	3389	842	4250	956	4428	908	4024	4668	27411	4583
Monthly Avg	40	303	35	324	49	316	40	282	70	354	80	369	76	335	389	2284	382



# Ongoing Projects

- Master plan – August 2024 (3 concept designs) -*Australian Infrastructure Financing Facility for the Pacific (AIFFP)*
- Repair on Charlie Wharf -*Australian Infrastructure Financing Facility for the Pacific (AIFFP)*
- Container Terminal Pavement (Sept 2024)
- Purchases of Heavy Machineries
- Upgrading of Ports Infrastructure -*JICA*

# Future Projects

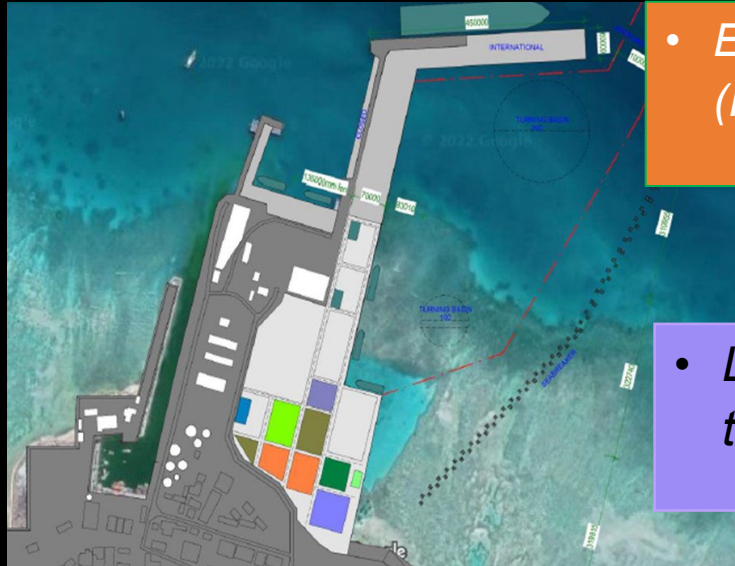
- *Using solar to connect to power grid (need assistance)*



ThePhoto by PhotoAuthor is licensed under CCYUSA.

- *Extension of Alpha and Delta Wharf (Incoporated in the Master plan)*

- *Land reclamation (Incoporated in the Master plan)*





# Challenges

- Effects of Climate change
  - Once in 3 months to repair our Seawalls
- Container Yard
  - congested, no land space
- Closure of Charlie Wharf
  - There is a delay in shipments of cargo to the outer islands
- Inadequate handling Machines



8/1/2024



# Interaction Time