

# Repair. The Sustainable Option

Nick Critchley – Managing Director



Together. Tomorrow.



# Buka Vinaka

MCM is a market leading company with an excellent track record in the repair and maintenance of infrastructure assets throughout Australia from its office bases in Sydney, Perth, Melbourne and Nadi, Fiji

MCM provides value to its client and the community by rehabilitating infrastructure for a more sustainable future

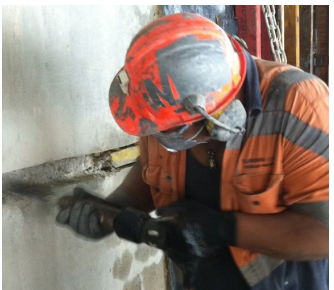
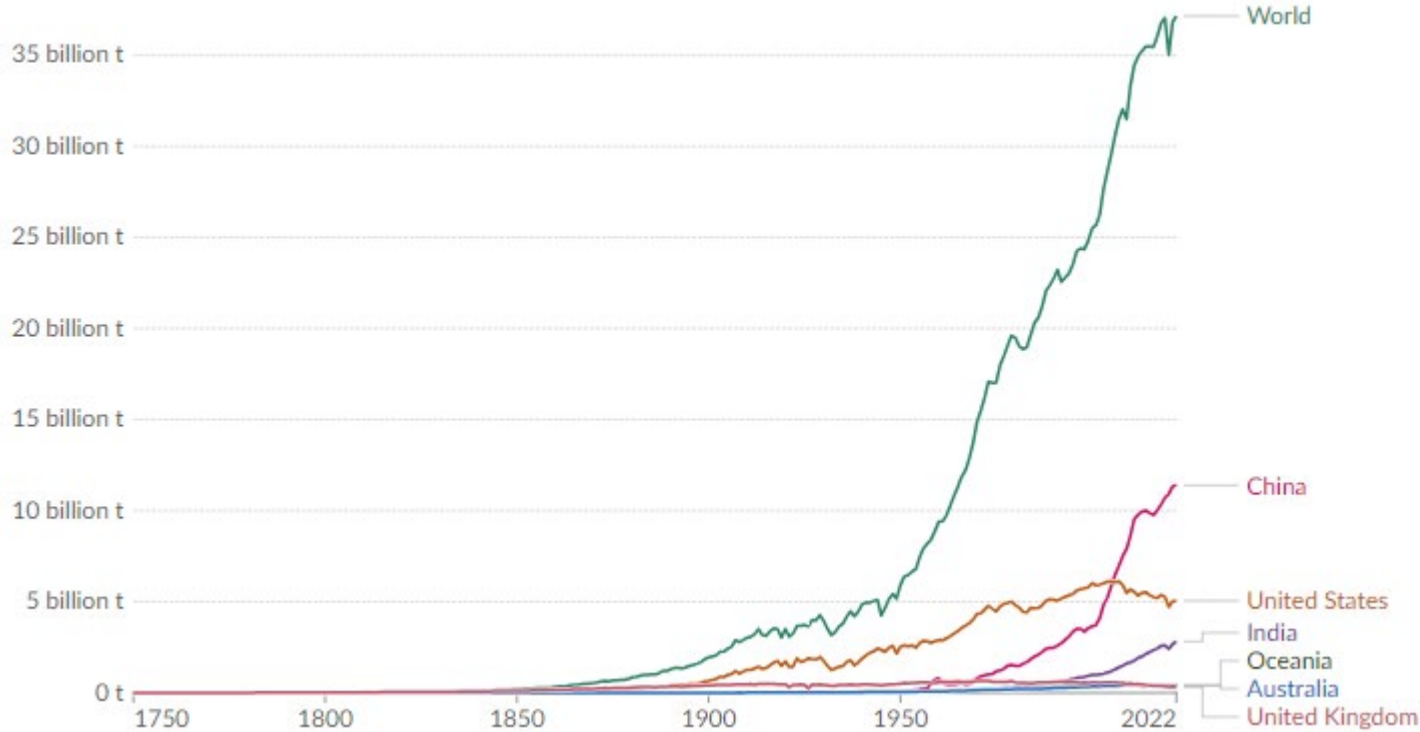


# Sustainability

Charting a Sustainable Course: Pioneering Green Practices for Pacific Ports and Trade



# Global contributors towards greenhouse gasses



Source: [www.ourworlddata.org/co2-and-greenhouse-gas-emissions](http://www.ourworlddata.org/co2-and-greenhouse-gas-emissions)

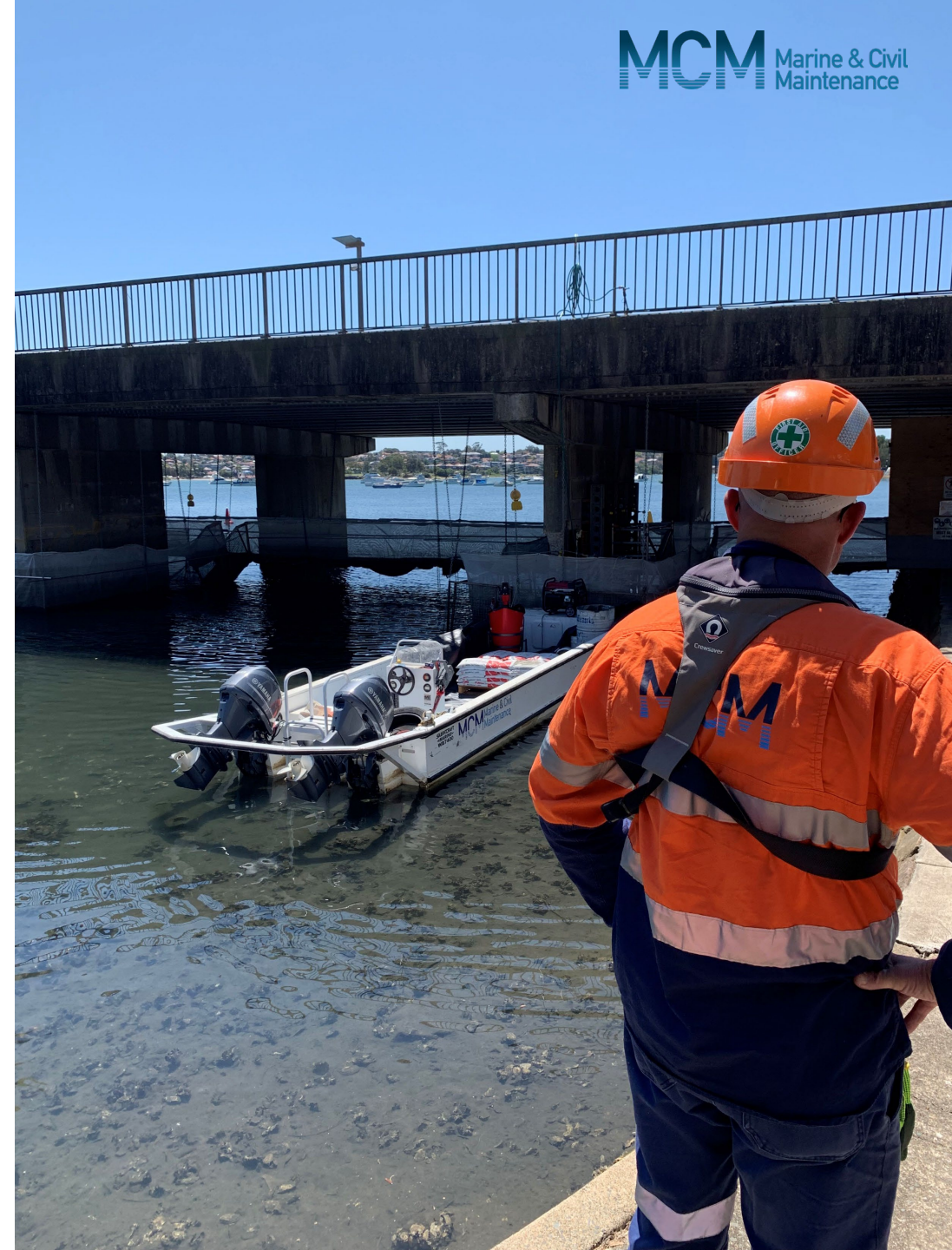
# Sustainable Remediation

- Sustainability is at the heart of our business.
- Our clients save money and cut carbon with sustainable remediation
- We aim to recycle and re-use wherever possible, and our dedication to sustainable practices extends beyond our natural alignment with the environment.
- Through MCM GreenTech, we deliver sustainable initiatives and innovative products to our clients and the broader community.



# Why do we do this?

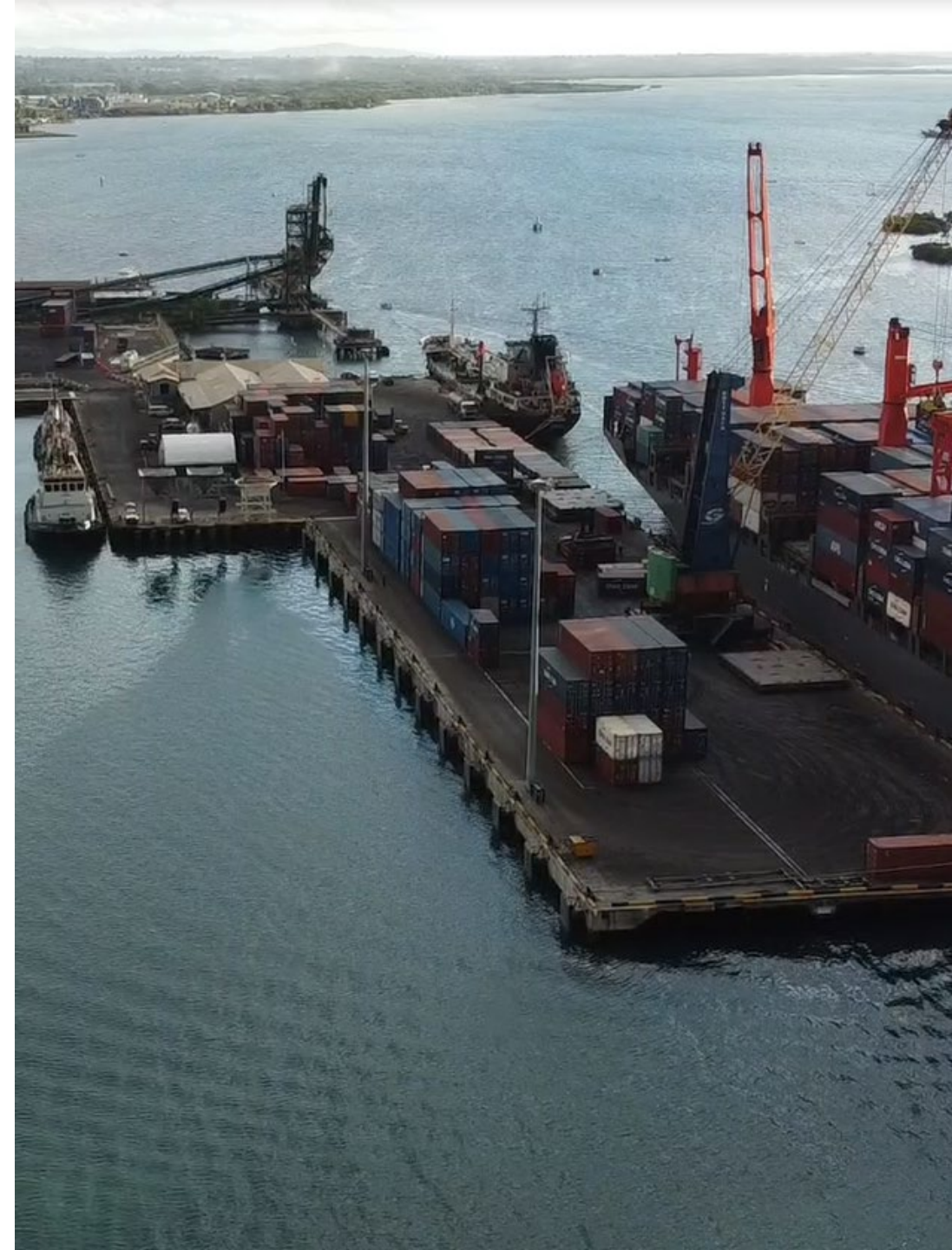
- The production of concrete contributes to 8% of greenhouse gas emissions (4 billion tonnes)
- Per m<sup>2</sup>, construction produces 183% more greenhouse gas emissions than maintenance
- Demolition and subsequent reconstruction is the least sustainable approach.



# How Fiji Ports is Charting the Course?

## Queens Wharf Remediation:

- Queens Wharf 1959 Section, 2005 section & Lautoka Local Wharf.
- Scope includes:
  - Extensive concrete repairs
  - Piles repairs
  - Fender pile replacement
  - Miscellaneous wharf improvements



# How Fiji Ports is Charting the Course?

## Queens Wharf Remediation:

- Sustainable innovations:
  - Remediation of a cathodic protection system for the steel piles in lieu of encasement
  - Application of electrochemical chloride extraction to dramatically increase the protected area of concrete





# How Fiji Ports is Charting the Course?

## Queens Wharf Remediation:

- Sustainable innovations:
  - Project completed by an 80% Fijian workforce
  - Repairs and maintenance to the MV YWAM KOHA
  - Donation of over 4,000 library books to Lautoka Primary in 2023
  - Donation of 24 laptop computers to Lautoka Primary in 2024



# Thank you

[nickc@marineandcivil.com.fj](mailto:nickc@marineandcivil.com.fj)



REHABILITATING INFRASTRUCTURE  
FOR A SUSTAINABLE FUTURE

