



Pacific  
Community  
Communauté  
du Pacifique

# **46<sup>th</sup> PACIFIC MARITIME TRANSPORT ALLIANCE CONFERENCE**

**22-23 July 24 – Nadi**

**Pacific Ports Vision 2050 – Recognition Framework**

**Name: Sitalingi Payne**  
**Organisation: Pacific Community (SPC)**



## SPC Maritime Integrated Programme

Community-centred approach to safety-for-all at sea



### Transport Team Areas of Work

- i. Safety of domestic ships,
- ii. Safety of Navigation and Aids to Navigation Services,
- iii. Reduction of Greenhouse Gas Emissions from shipping,
- iv. **Green Pacific Ports,**
- v. Technical Cooperation Framework on collaboration with IMO,
- vi. Flag State Implementation and the Pacific MoU,
- vii. Legal and Policy Advisory and Drafting support services,
- viii. Support for Women in Maritime, and
- ix. **Secretariat support to regional maritime associations.**

## Green Pacific Ports/Pacific Ports Vision 2030 -2050: Background

- **2015:** Development of the Green Pacific Port concept in collaboration with SPREP and promotion of the concept of Green Port at the occasion of various forums.
- **2016 – 2018:** Pilot activities with Fiji Port Corporation Limited, Solomon Islands Ports Authority and Ports Authority Tonga.
- **2019:** Transport Ministers in 2019 adopted the Pacific Ports Vision 2030 – 2050: *a vision of resilient, green and clean Pacific Ports*; and tasked SPC to Develop a Recognition Framework to support the vision.
- **2022:** Recognition Framework was developed in collaboration with IMO, SPREP and PMTA.
- **2023:** Recognition Framework adopted by the Transport Ministers during at the 5<sup>th</sup> Pacific Region Transport and Energy Ministers' Meeting.

# Long Term Objective



## Pacific Ports Vision 2030 - 2050



- **Resilient:** The port is profitable and has the capacity to absorb, adapt to, and recover from disruptions.
- **Green:** The port has net zero carbon emissions.
- **Clean:** The port minimises its impact on surrounding natural environments & local communities.



Resilient	Green	Clean
<ul style="list-style-type: none"><li>• Climate change adaptation</li><li>• Disasters &amp; emergency response</li><li>• cybersecurity</li><li>• Support for economic development &amp; operational efficiency</li><li>• Compliance with international standards<ul style="list-style-type: none"><li>➤ Security</li><li>➤ Safety</li><li>➤ Data Exchange</li></ul></li></ul>	<ul style="list-style-type: none"><li>• Climate change mitigation<ul style="list-style-type: none"><li>➤ Carbon neutrality</li><li>➤ Leadership</li><li>➤ Measurement &amp; monitoring</li><li>➤ Execution</li></ul></li><li>• Energy Efficiency<ul style="list-style-type: none"><li>➤ Awareness</li><li>➤ Execution</li></ul></li><li>• Incentivizing green shipping<ul style="list-style-type: none"><li>➤ Engagement</li><li>➤ Implementation</li></ul></li></ul>	<ul style="list-style-type: none"><li>• Water quality</li><li>• Marine spills</li><li>• Waste management</li><li>• Community and neighbourhood relations</li><li>• Dredging &amp; coastal hydrology</li><li>• Environmental engagement and compliance</li></ul>

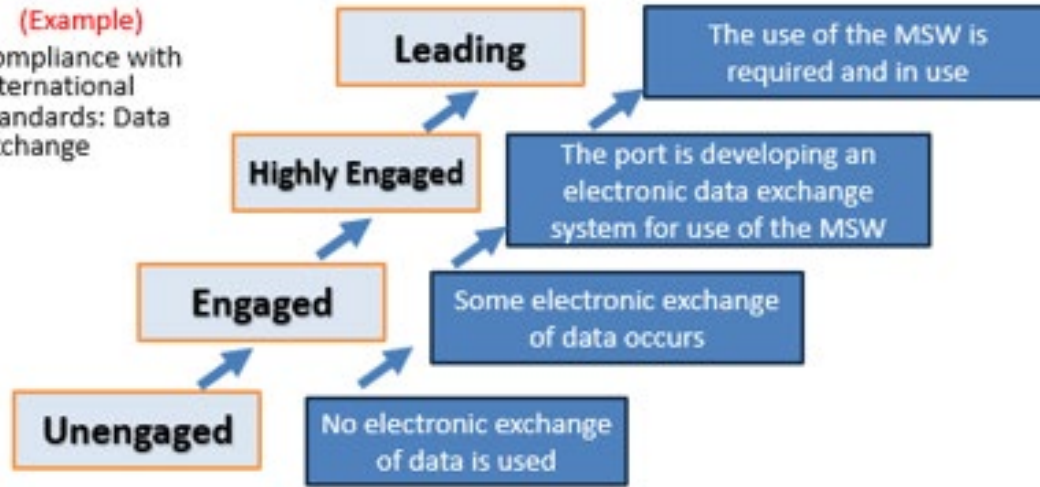


# Accreditation Indicators

## Performance Indicators

• (Example)

Compliance with International Standards: Data Exchange



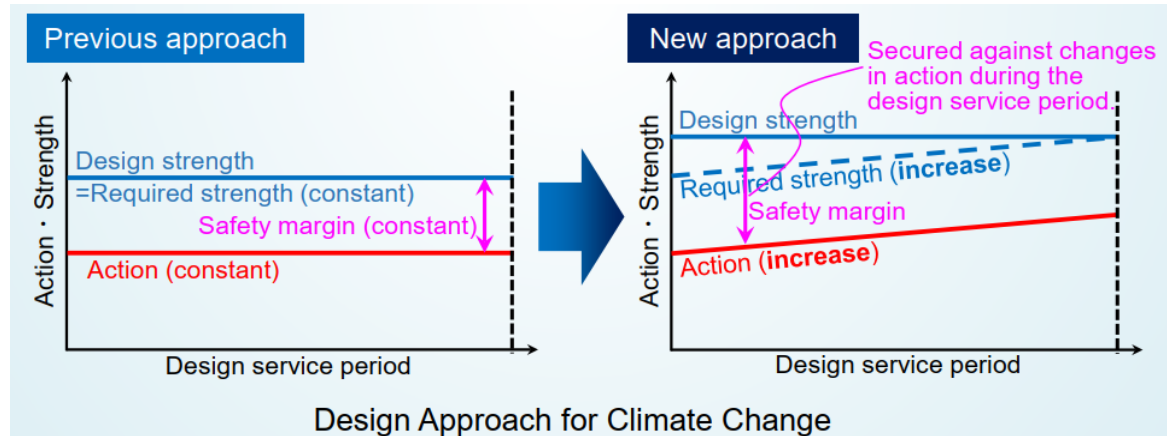
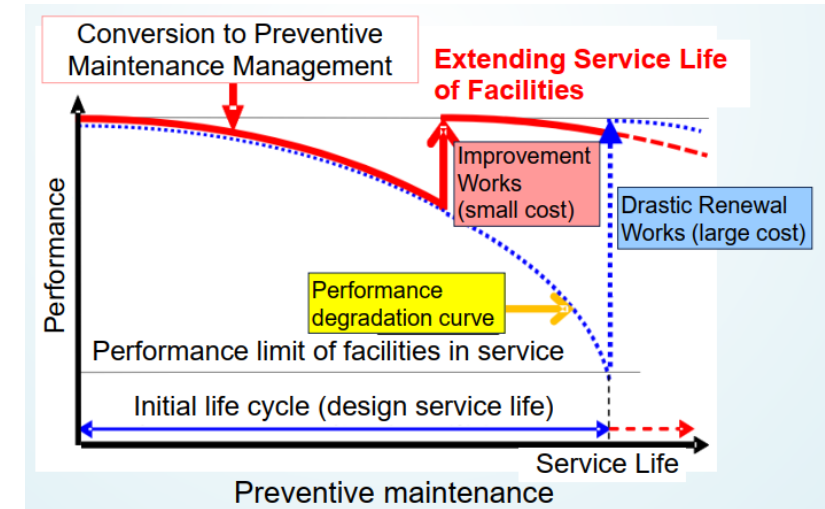
<b>Leading</b>	Leading ports are recognised as high achieving models of resilient, efficient, and sustainable ports in the Pacific region in all or most indicators. They demonstrate consistent commitment and growth towards the 2050 Pacific ports vision and have achieved improvements in port operations and development in line with long-term objectives for resilient, clean, and green ports.
<b>Highly Engaged</b>	Highly Engaged ports are recognised as making significant contributions to long-term objectives and 2050 vision for resilient, green, and clean Pacific ports. They have made specific, targeted goals to improve port operations and have begun implementing those plans.
<b>Engaged</b>	Engaged ports are recognised as making preliminary steps towards identifying areas for improvement and developing plans relevant to long-term objectives and the 2050 vision for resilient, green, and clean ports. Initial assessment and measurements may have been completed but plans have not yet been developed or implemented.
<b>Unengaged</b>	An unengaged port is yet to develop any plan or undertake any action relevant to long-term objectives and the 2050 vision for resilient, green, and clean ports.

# General Pathways



# JICA Project - Advisory Services for Port Operations and Maintenance Policies

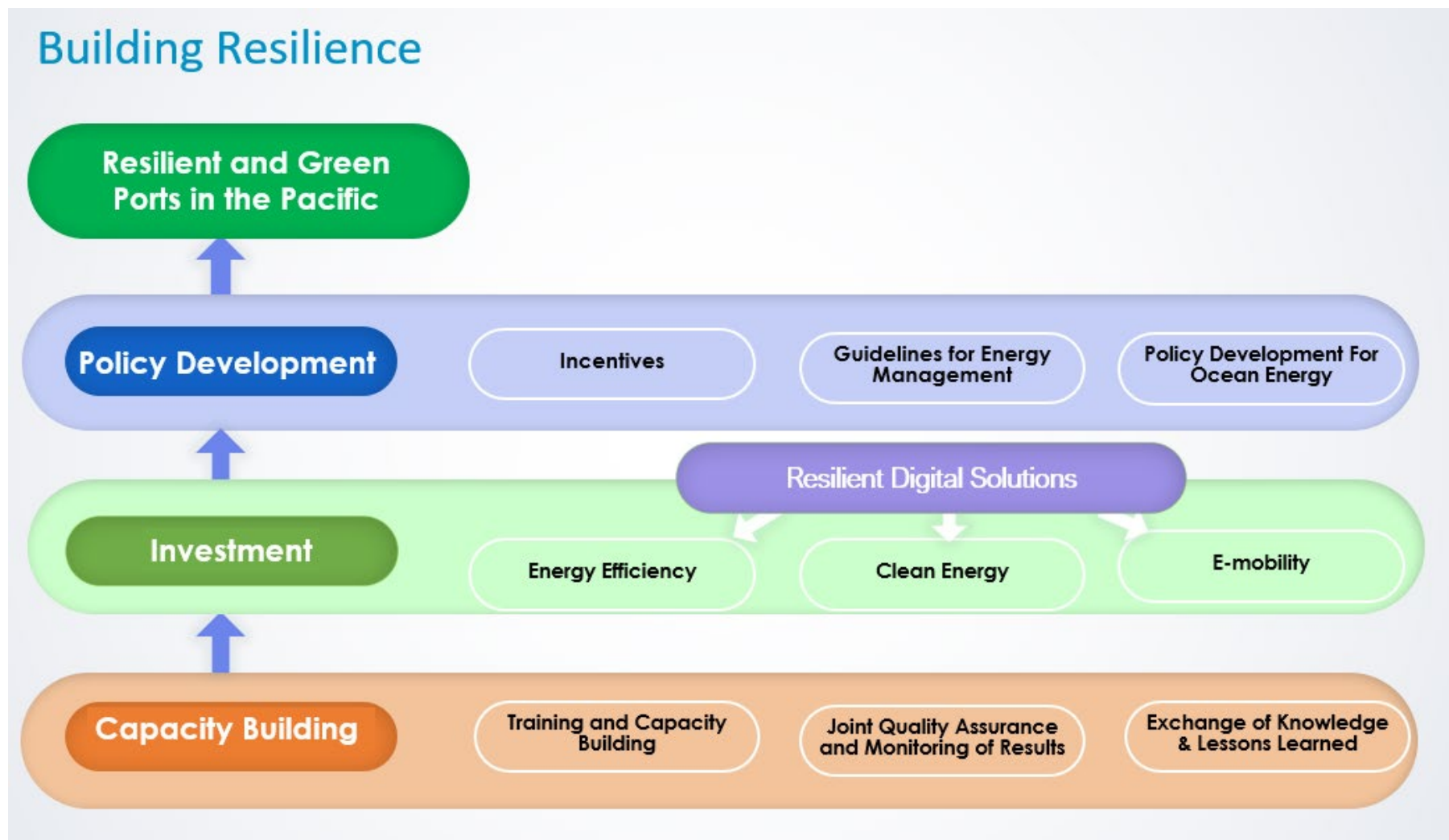
- 1. Goal** – To establish a sustainable maritime transport system in the Pacific Region by advancing measures for improving port resilience and port maintenance management
- 2. Outcome** – Produce strategy for the resilience of key ports and harbors in the Pacific Island countries.
- 3. Beneficiaries** – Eleven (11) Ports in six (6) Countries. Fiji, Samoa, Solomon Islands, Tonga, Tuvalu and Vanuatu. management
- 4. Implementation** – Jointly execute by JICA and SPC. Commence from July 2023 to June 2025



- Surveys and inspections completed for Fiji, Tonga, Solomon Islands and Tuvalu.
- Field visit to Samoa and Vanuatu scheduled for September and December 2024.
- Regional Seminar on Port resilience Strategies scheduled for first Quarter 2025.
- Final Reports in June 2025.



## Project Idea for GCF: Fostering Resilient and Green Port in the Pacific





## Port Related Activities: 2022 to Date

Activity	Completed	Country	To complete in 2024	Country
Port Security Assessment	4	Vanuatu	1	FSM Kosrae
PFSO Training	2	Solomon Is., Vanuatu	1	Vanuatu, Niue
MSG Training	1	Vanuatu	1	FSM Kosrae
Internal Auditors Training	4	Solomon Is, Cook Is, Vanuatu, Fiji	-	-
Mentoring Trainee Auditors	4	Palau, Vanuatu, Cook Is. , Fiji,	2	Solomon Is
Developing Audit Programme	3	Palau, Vanuatu, Cook Islands.	-	-
ISPS Audit	8	Palau, Vanuatu, Fiji	-	-
National FAL Seminar	2	Samoa, Cook Is.	2	Tonga, Tuvalu
Regional FAL Workshop	1	Regional (Nadi)	-	-
Green port Webinar	1	Regional	5	Regional
Port Verification	-	-	6	TBC

## Administration of the Framework

- Securing funding to support the deployment and use of the framework.
- Raising awareness of the framework amongst Pacific ports.
- Facilitating training and provision of tools, templates, and a technical help desk for ports to work with.

---

# Verification

- Six ports planned for 2024
  - Port submit self-assessment against the recognition indicators
  - SPC/SPREP/OG review evidence submitted by a port when claiming any level of achievement above “unengaged”
  - SPC/SPREP/OG conduct or oversee 3rd party audits against the recognition indicators.

---

# Recognition and Certification

- Proposing the first Recognition and Certification Event to be held in conjunction with the 47<sup>th</sup> PMTA Conference in 2025.



Thank you!